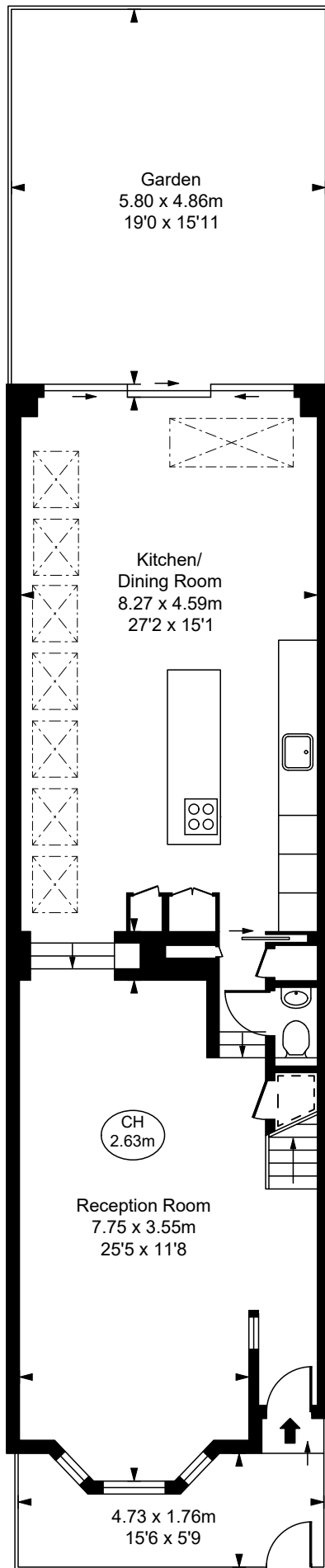
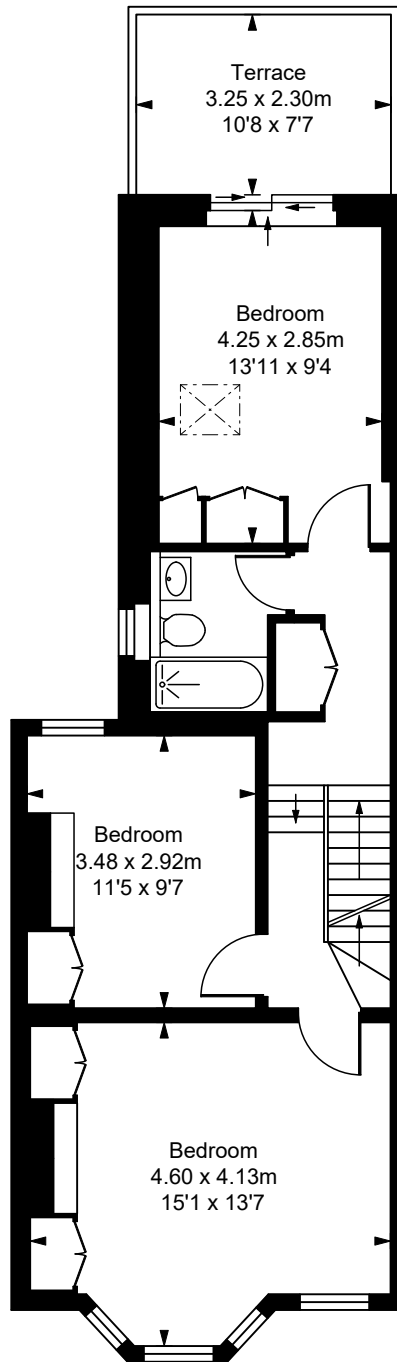


Ashcombe Street, SW6
Approximate Gross Internal Area
168.21 sq m / 1,811 sq ft

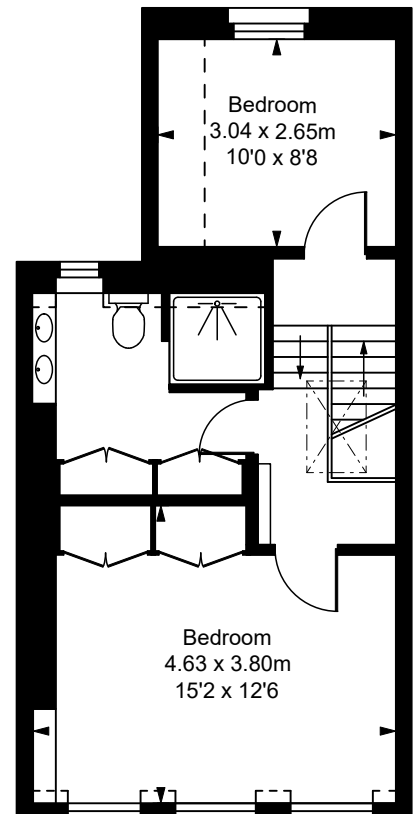
(Including restricted height
under 1.5m □ □ □ □)
(CH = Ceiling Heights)



Ground Floor
Approximate Gross Internal Area
74.67 sq m / 804 sq ft



First Floor
Approximate Gross Internal Area
53.54 sq m / 576 sq ft



Second Floor
Approximate Gross Internal Area
40.01 sq m / 431 sq ft